

**Contact Info:**

Sabine Parish Tourist & Recreation Commission
1601 Texas Hwy, Many, LA 71449
318.256.5880
Georgia Craven, Director
georgia@toledobendlakecountry.com

TOLEDO BEND FOREST BY-WAY

Sabine Parish, Louisiana



The Toledo Bend Forest Scenic Byway travels the length of Toledo Bend Reservoir with stately pines and breathtaking lake views along the byway. Highway 171 and Hwy 6, plus other arms of the Scenic Byway provide links to towns, villages, and communities in Toledo Bend Lake Country as well as numerous sights and attractions. Beaches, state parks & historic sites, a luxury golf course, a 26-mile bike trail, interpretive signage areas, observation towers at the dam and excellent opportunities for birding, including habitats for bald eagles, are accessible along the byway.

www.ToledoBendLakeCountry.com

Follow us on Social Media!

Facebook: Toledo Bend Lake Country

Twitter: TolBendCountry

Instagram: Toledo Bend Lake Country

#ILoveToledoBend

Suggestions:

Places to eat along the by-way

L & W Tamale House, 1547 Oak St., Zwolle, LA

TC's Deli, 24142 LA 191, Zwolle, LA

Fisherman's Galley Restaurant, 14934 Texas Hwy, Many, LA

Mr. C's Café, 11904 Texas Hwy, Many, LA

Mary Ann's, Texas Hwy, Many, LA

Bub T's Tamale House, 15 Commercial Drive, Many, LA

Curtis Grocery & Deli, 8601 LA-473, Florien, LA

Fuel/Restroom Stops

There are many places to fuel up or take a break along the byway.

Toledo Town & Tackle, 11904 Texas Hwy, Many, LA

Toledo Tourist Center, 15091 Texas Hwy, Many, LA



Logansport

DeSoto Parish Tourist Bureau

318-872-1177

www.townoflogansport.com

Logansport boasts the only international boundary marker existing within the continental United States. The one-of-a-kind granite shaft landmark was placed at its current location in 1841. The Sabine River was officially established as the boundary between the US and Spanish Mexico by the Adman-Onis Treaty of 1819. Twenty years and a revolution later, the demarcation of the official border line between Louisiana and Texas was established in the center of the Sabine River.



San Patricio Overlook/Hot Wells

Sabine River Authority

Hwy. 191, North of Zwolle

318-256-4112

San Patricio Overlook has 0.15 miles of shoreline to fish from and 1.5 acres to explore. The San Patricio roadside park is located approximately 16 miles north of the intersection of La. Hwy 191 and La. Hwy 6. San Patricio offers a handicapped accessible fishing pier, benches and picnic tables for your convenience.

Directions: San Patricio is located on Highway 191, 0.2 miles north of the junction where Highway 1218 intersects Highway 191. It is on the west side of the highway.



North Toledo Bend State Park 2907

North Toledo Park Rd.

Zwolle, La 71486

318-645-4715

Entrance Fee \$3 per person, free for seniors & children

North Toledo Bend State Park includes more than 900 acres of pine woodland with abundant waterfront accommodations and activities. A longtime favorite with locals and visitors, North Toledo Bend State Park offers the visitor rolling uplands and interconnected ravines and valleys. Mixed pine and hardwood forest cover most of the park. The park amenities offer year-round versatility and appeal. Once you discover it, you'll return year after year to enjoy either the log cabins with fireplaces, or the beautifully designed RV park.



Clyde's Crossing

Sabine River Authority

Hwy. 191

318-256-4112

Clyde Crossing Park is a 2.5-acre park where visitors can enjoy a picnic area, barbeque pits, a covered fishing pier, and incredible scenery of Toledo Bend Lake. This park commemorates the actual historical site of Clyde with its early years of trading goods and communication with the west. Today, the only remains are an old cemetery located at the actual site of "Clyde's Crossing".

Directions: On Hwy 191 just North of Zwolle, La. The park is on the East side of the highway just north of the westbound junction of Louisiana Highway 482.



Cypress Bend Golf and Conference Resort

2000 Cypress Bend Pkwy.

Many, La 71449 318-590-1500

Cypress Bend Golf & Conference Resort, located on the central part of the lake, offers a beautiful lakeside location on 400 acres of rolling hills. All amenities are in close proximity with breathtaking views of the lake and surrounding woods. Cypress Bend offers 67 luxurious guest rooms including 18 suites, fine dining in the Cypress Dining Room, casual dining in the Cypress Cafe, and wine and spirits in the Sabine Social Room. Guests of Cypress Bend will enjoy an elegant full-service Spa and Salon, fitness center, indoor/outdoor pool, and an 18-hole championship golf course-part of Louisiana's Audubon Golf Trail. Restrooms are available.



Cypress Bend Park

3462 Cypress Bend Drive

Many, La 71449 318-256-4118

Entrance fee: \$2 per person

Cypress Bend offers 60 RV campsites and 12 waterfront cabins. Come and have a relaxing day on the beach while the kids play on our well-equipped playground. Set up for your convenience is a volleyball net where you're sure to always find a good game. Adjoining the beach are covered pavilions with picnic tables and restrooms. If you're looking to just relax and do some fishing, we offer a 6-lane paved boat ramp or you can enjoy our lighted pier, which is handicap accessible.



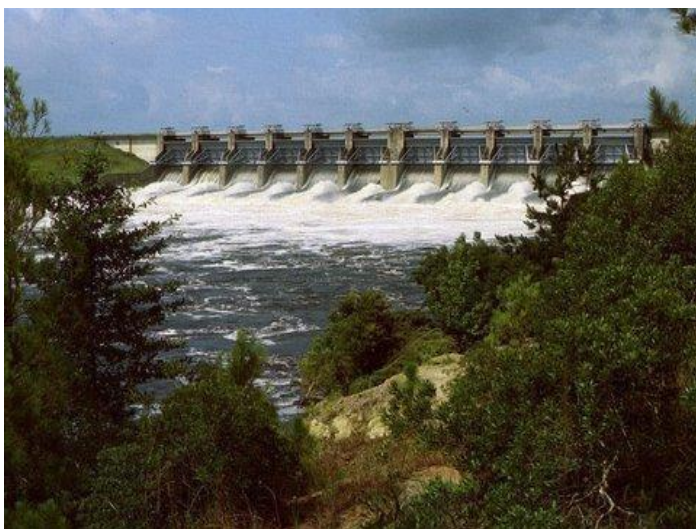
South Toledo Bend State Park

120 Bald Eagle Rd.

Anacoco, La 71403 337-286-9075

Entrance Fee: \$3 per person, free for seniors & children

South Toledo Bend State Park is one of the newest editions to Louisiana's State Park system. South Toledo Bend State Park has wasted no time in becoming a favorite for locals and visitors. The park, located close to the Toledo Bend Dam on the far southern shores of the lake, offers RV camping and cabins. It is at 120 Bald Eagle Road (yes, there are plenty of bald eagle sightings in the area!) in Anacoco, Louisiana. The park features an Interpretative Center, displaying informational booths about the fish and wildlife native to the area. Restrooms.



Toledo Bend Dam

LA Hwy 191

Anacoco, LA

Construction on the Toledo Bend Dam, spillway, and power plant began in October of 1961. The Toledo Bend Project was constructed primarily for the purposes of water supply, hydroelectric power generation, and recreation. Toledo Bend Reservoir forms a portion of the boundary between the states of Texas and Louisiana. The reservoir extends up the river for about 65 miles to Logansport, LA with 1,500 miles of shoreline. Restrooms available at observation tower.